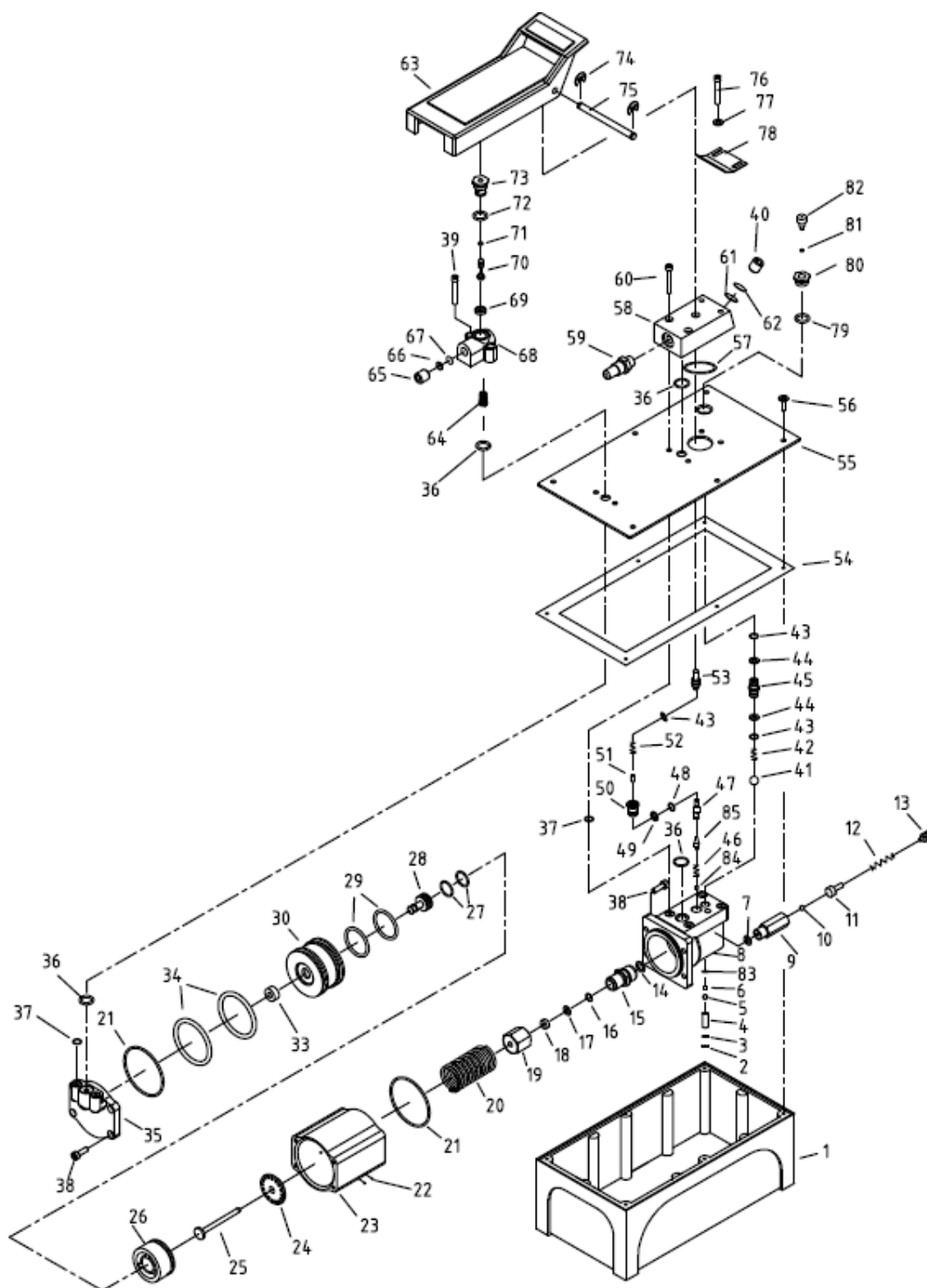




EAGLE PRO Air Hydraulic Pumps should be repaired only by a qualified operator or Authorized EAGLE PRO Service Center. Only use EAGLE PRO or other approved hydraulic oil. Always release pressure in hydraulic system and disconnect hose(s) before attempting any repair or service.

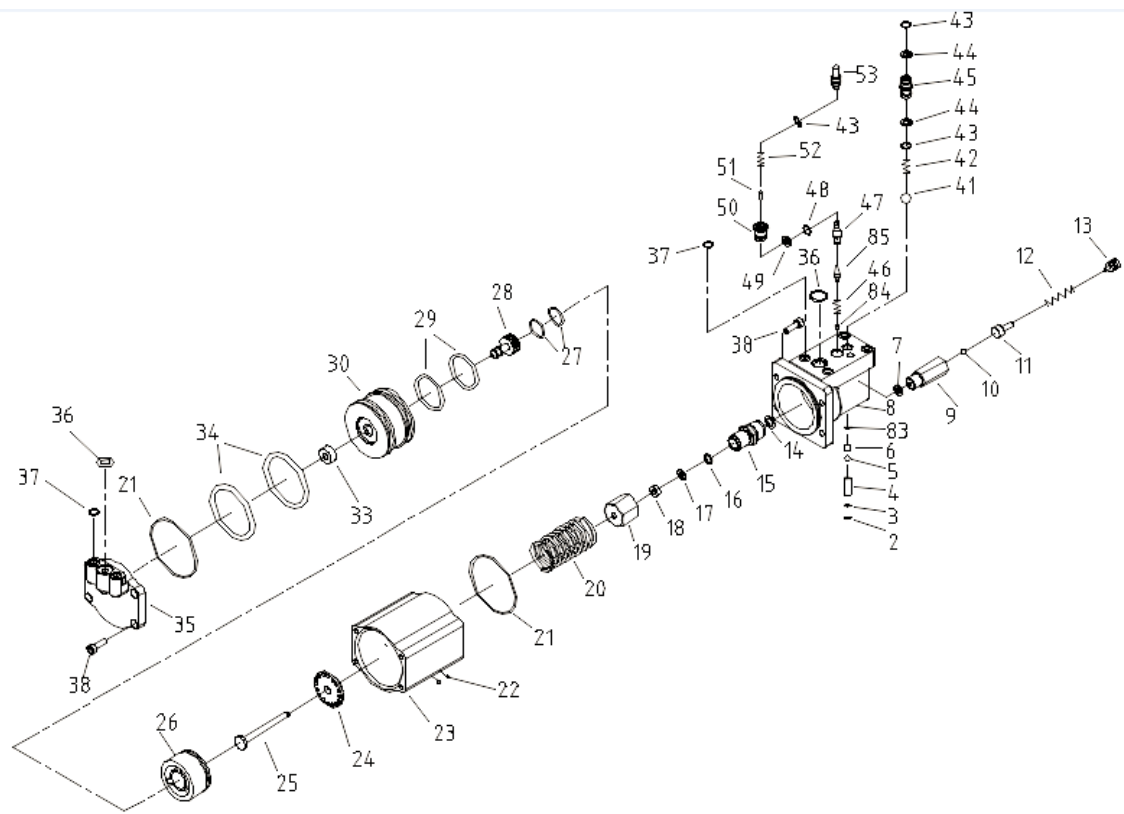
Parts List



No.	Part Number	Description	Qty.	No.	Part Number	Description	Qty.
1	QY1-4	Reservoir	1	46	QY2-12	Spring	1
2	13135	Snap Ring	1	47	QY2.3	Spool	1
3	QY2-33	Oil Filter	1	48★	QY2-15	O-ring (8.75*1.8)	1
4	QY2-11	Oil Suction Tube	1	49★	QY2-16	Nylon Gasket	1
5	41007	Steel Ball (6.0)	1	50	QY2-17	Release Valve	1
6	QY2-14A	Snap Ring	1	51	QY2-29	Pin	1
7★	QY2-13	Copper Washer	1	52	QY2-28	Spring	1
8	QY2-10	Valve Block	1	53	QY2-22	Release Rod	1
9	QY2.2-1	Safety Valve	1	54★	QY1-3	Seal	1
10	41003	Steel Ball (4.0)	1	55	QY1-2	Cover	1
11	QK5.3-22	Ball Seat	1	56	GB5285-85	Bolt (st6.3*35)	12
12	QK5.3-21	Safety Valve Spring	1	57★	QY2-34	O-ring (35.5*46)	1
13	QK5.3-20	Pressure Adjustment Bolt	1	58	QY2-21	Manifold	1
14★	YG1/2.1-3	Copper Washer	1	59	QY100-01-0024	Exhaust Muffler	1
15	QY2-9	Pump Cylinder	1	60	11007	Hex Socket Cap Bolt (M6*35)	2
16★	QD22.3-16	Y-ring	1	61	GB5330-85	Filter	1
17★	QD22.3-15	Nylon Gasket	1	62	13300	Snap Ring	1
18★	QD22.3-14	Copper Washer	1	63	QY2-1	Foot Pedal	1
19	QD20.2-9	Nut	1	64	QY2-5	Spring	1
20	QY2-8	Spring	1	65	22T00-01-0012	Set Screw (1/4" NPT)	1
21★	GB3452-1-82	O-ring (65*1.8)	2	66	GB893.1-86	Gasket	1
22	41016	Steel Ball (3)	4	67	GB5330-85	Filter	1
23	QY2-7	Air Pump Housing	1	68	QY2.1-2	Air Valve	1
24	QD20.2-8	Washer	1	69	QD22.11.1-4	Seal	1
25	QD22.3-13	Pump Plunger	1	70	QY2.1-1	Air Valve Rod	1
26	QD20.2-6	Air Piston Base	1	71★	QD22.11.1-7	O-ring (2.8*1.8)	1
27★	QD20.2-5	O-ring (20.3*2.5)	2	72★	QK5.3-2	O-ring (14*2.65)	1
28	QD20.2-2	Air Shuttle Valve	1	73	QD22.11.1-5	Switch Coupler	1
29★	QK2.6-19	O-ring (42.7*3.7)	2	74	13292	Snap Ring	2
30	QD20.2-7	Piston	1	75	QY2-24	Pin	1
33	QD20.2-3	Shuttle Valve Seal	1	76	11009	Socket Cap Bolt (M6*45)	2
34★	QD22.3-11	O-ring (56*5.3)	2	77	13115	Washer	2
35	QY2-6	Rear Cover	1	78	QY2-23	Lock Plate	1
36★	24276	O-ring (13.2*2.65)	4	79	QY2-27	Seal	1
37★	QD20-15	O-ring (7.1*2.65)	6	80	QY2-26	Oil Filter Plug	1
38	11004	Hex Socket Cap Bolt (M6*20)	8	81★	24187	O-ring (2.8*1.8)	1
39	11006	Hex Socket Cap Bolt (M6*30)	2	82	QY2-25	Air Plug	1
40	QY100-01-0006	Set Screw (3/8" NPT)	1	83★	QY2-32	Copper Washer A	1
41	41017	Steel Ball (9.0)	1	84	GB77-85	Set Screw (M5*8)	1
42	QD22.2-9	Spring	1	85	QY2.3-2	Cone valve	1
43★	QY2-20	O-ring (6.7*1.8)	3	86★	900EP2	Eagle Pro and Warning Labels	
44	QY2-19	Gasket	2				
45	QY2-18	Coupler	1				

★ Items included in Repair Kit, Repair Kit order number: **EPC002-RP-A**

AIR MOTOR



No.	Part Number	Description	Qty.	No.	Part Number	Description	Qty.
2	13135	Snap Ring	1	34	QD22.3-11	O-ring (56*5.3)	2
3	QY2-33	Oil filter	1	35	QY2-6	Rear Cover	1
4	QY2-11	Oil Suction Tube	1	36	24276	O-ring (13.2*2.65)	4
5	41007	Steel Ball (6)	1	37	QD20-15	O-ring (7.1*2.65)	6
6	QY2-14	Snap Ring	1	38	11004	Hex Socket Cap Bolt (M6*20)	8
7	QY2-13	Copper Washer	1	41	41017	Steel Ball (9)	1
8	QY2-10	Valve Block	1	42	QD22.2-9	Spring	1
9	QY2.2-1	Safety Valve	1	43	QY2-20	O-ring (6.7*1.8)	3
10	41003	Steel Ball (4)	1	44	QY2-19	Nylon Gasket	2
11	QK5.3-22	Ball Seat	1	45	QY2-18	Coupler	1
12	QK5.3-21	Safety Valve Spring	1	46	QY2-12	Spring	1
13	QK5.3-20	Pressure Adjusting Bolt	1	47	QY2.3	Spool	1
14	YG1/2.1-3	Copper Washer	1	48	QY2-15	O-ring (8.75*1.8)	1
15	QY2-9	Pump Cylinder	1	49	QY2-16	Nylon Gasket	1
16	QD22.3-16	Y-ring	1	50	QY2-17	Release Valve	1
17	QD22.3-15	Nylon Gasket	1	51	QY2-29	Pin	1
18	QD22.3-14	Copper Washer	1	52	QY2-28	Spring	1
19	QD20.2-9	Nut	1	53	QY2-22	Release Rod	1
20	QY2-8	Spring	1	83	QY2-32	Copper Washer A	1
21	GB3452-1-82	O-ring (65*1.8)	2	84	GB77-85	Set Screw (M5*8)	1
22	41016	Steel Ball (3)	4	85	QY2.3-2	Cone Valve	1
23	QY2-7	Air Pump Housing	1				
24	QD20.2-8	Washer	1				
25	QD22.3-13	Pump Plunger	1				
26	QD20.2-6	Air Piston Base	1				
27	QD20.2-5	O-ring (20.3*2.5)	2				
28	QD20.2-2	Air Shuttle Valve	1				
29	QK2.6-19	O-ring (42.7*3.7)	2				
30	QD20.2-7	Piston	1				
33	QD20.2-3	Shuttle Valve Seal	1				