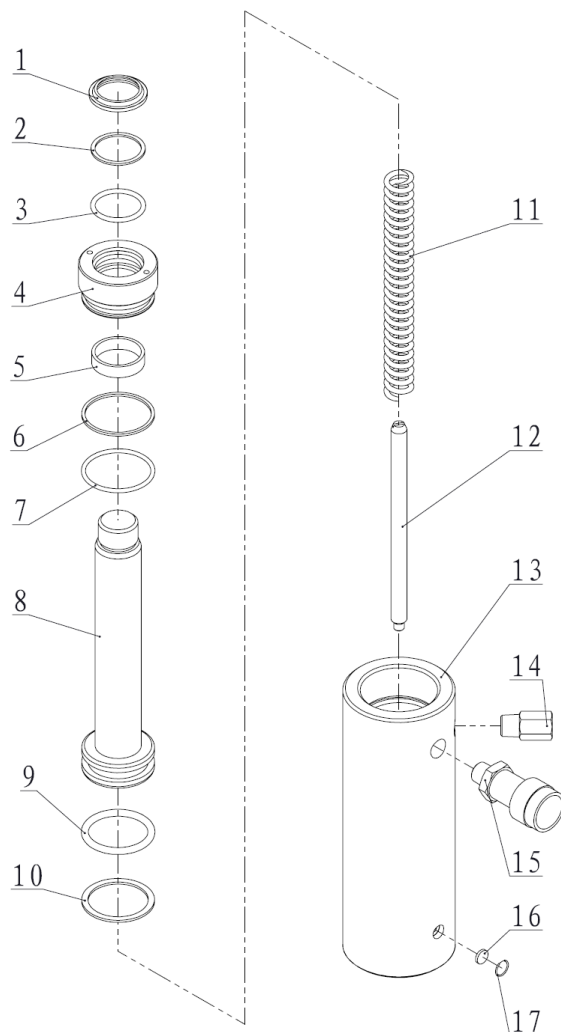




EAGLE PRO Cylinders should be repaired only by a qualified operator or Authorized EAGLE PRO Service Centers. Use Only EAGLE PRO or other approved hydraulic oil. Release pressure in hydraulic system and disconnect hose(s) before making repair.

Parts List



Item No.	Part Number	Description	Qty.	Item No.	Part Number	Description	Qty.
1★	JB-d35	Wiper Ring	1	10★	21298	Gasket	1
2★	21262	Gasket	1	11	ESP106L-08	Spring	1
3★	24216	O-ring	1	12	ESP106L-04	Scroll	1
4	ESP106L-06	Guide Ring	1	13	ESP106-01	Cylinder	1
5	21524	Anti-wear Ring	1	14	EF3.1	Safety Valve	1
6★	21305	Gasket	1	15	EAB201A	Coupler	1
7★	24223	O-ring	1	16	ESP606-04	Filter	1
8	ESP106L-05	Piston Rod	1	17	13299	Snap Ring	1
9★	24248	O-ring	1				

★ Items included in Repair Kit, Repair Kit order number: **ESP106-RP-A**