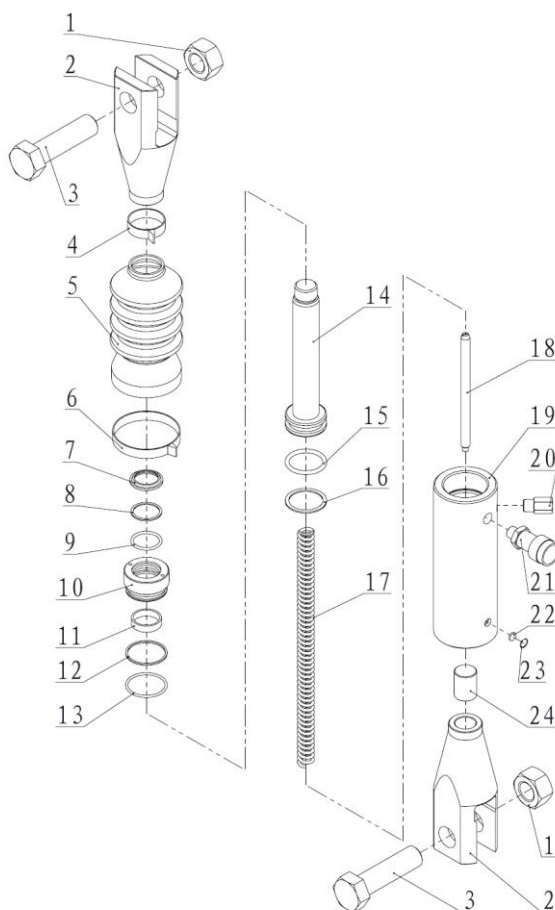




EAGLE PRO Cylinders should be repaired only by a qualified operator or Authorized EAGLE PRO Service Centers. Use Only EAGLE PRO or other approved hydraulic oil. Release pressure in hydraulic system and disconnect hose(s) before making repair.

Parts List



Item No.	Part Number	Description	Quantity	Item No.	Part Number	Description	Quantity
1	14044	Nut	2	13★	24223	O-ring	1
2	ESP106C-01	Link Ring	2	14	ESP106L-05	Piston Rod	1
3	13106	Bolt	2	15★	24248	O-ring	1
4	ESP106L-10	Clamp A	1	16★	21298	Gasket	1
5	ESP106L-07	Rubber Boot	1	17	ESP106L-08	Spring	1
6	ESP106L-11	Clamp B	1	18	ESP106L-04	Scroll	1
7★	JB-D35	Wiper Ring	1	19	ESP106L-03	Cylinder	1
8★	21262	Gasket	1	20	EF3.1	Safety Valve	1
9★	24216	O-ring	1	21	EAB201A	Coupler	1
10	ESP106L-06	Guide Ring	1	22	ESP606-04	Filter	1
11	21524	Anti-wear Ring	1	23	13299	Snap Ring	1
12★	21305	Gasket	1	24	ESP106L-02	Link Rod	1

★ Items included in Repair Kit, Repair Kit order number: **ESP106L-RP-A**