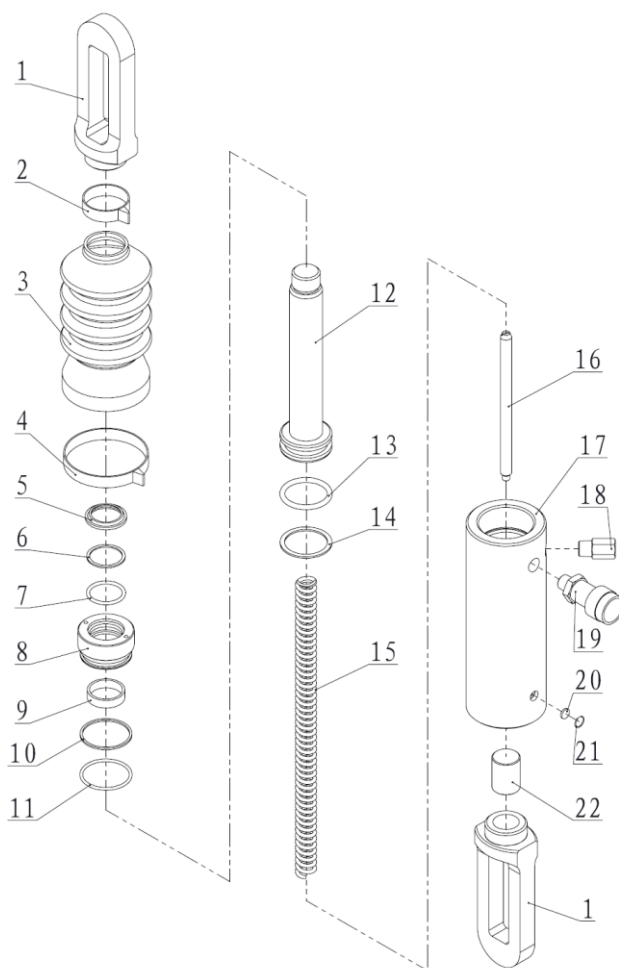




EAGLE PRO Cylinders should be repaired only by a qualified operator or Authorized EAGLE PRO Service Centers. Use Only EAGLE PRO or other approved hydraulic oil. Release pressure in hydraulic system and disconnect hose(s) before making repair.

**Parts List**



| Item No. | Part Number | Description    | Quantity | Item No. | Part Number | Description  | Quantity |
|----------|-------------|----------------|----------|----------|-------------|--------------|----------|
| 1        | ESP106L-01  | Link Ring      | 2        | 12       | ESP106L-05  | Piston Rod   | 1        |
| 2        | ESP106L-10  | Clamp A        | 1        | 13★      | 24248       | O-ring       | 1        |
| 3        | ESP106L-07  | Rubber Boot    | 1        | 14★      | 21298       | Gasket       | 1        |
| 4        | ESP106L-11  | Clamp B        | 1        | 15       | ESP106L-08  | Spring       | 1        |
| 5★       | JB-D35      | Wiper Ring     | 1        | 16       | ESP106L-04  | Scroll       | 1        |
| 6★       | 21262       | Gasket         | 1        | 17       | ESP106L-03  | Cylinder     | 1        |
| 7★       | 24216       | O-ring         | 1        | 18       | EF3.1       | Safety Valve | 1        |
| 8        | ESP106L-06  | Guide Ring     | 1        | 19       | EAB201A     | Coupler      | 1        |
| 9        | 21524       | Anti-wear Ring | 1        | 20       | ESP606-04   | Filter       | 1        |
| 10★      | 21305       | Gasket         | 1        | 21       | 13299       | Snap Ring    | 1        |
| 11★      | 24223       | O-ring         | 1        | 22       | ESP106L-02  | Link Rod     | 1        |

★ Items included in Repair Kit, Repair Kit order number: **ESP106L-RP-A**