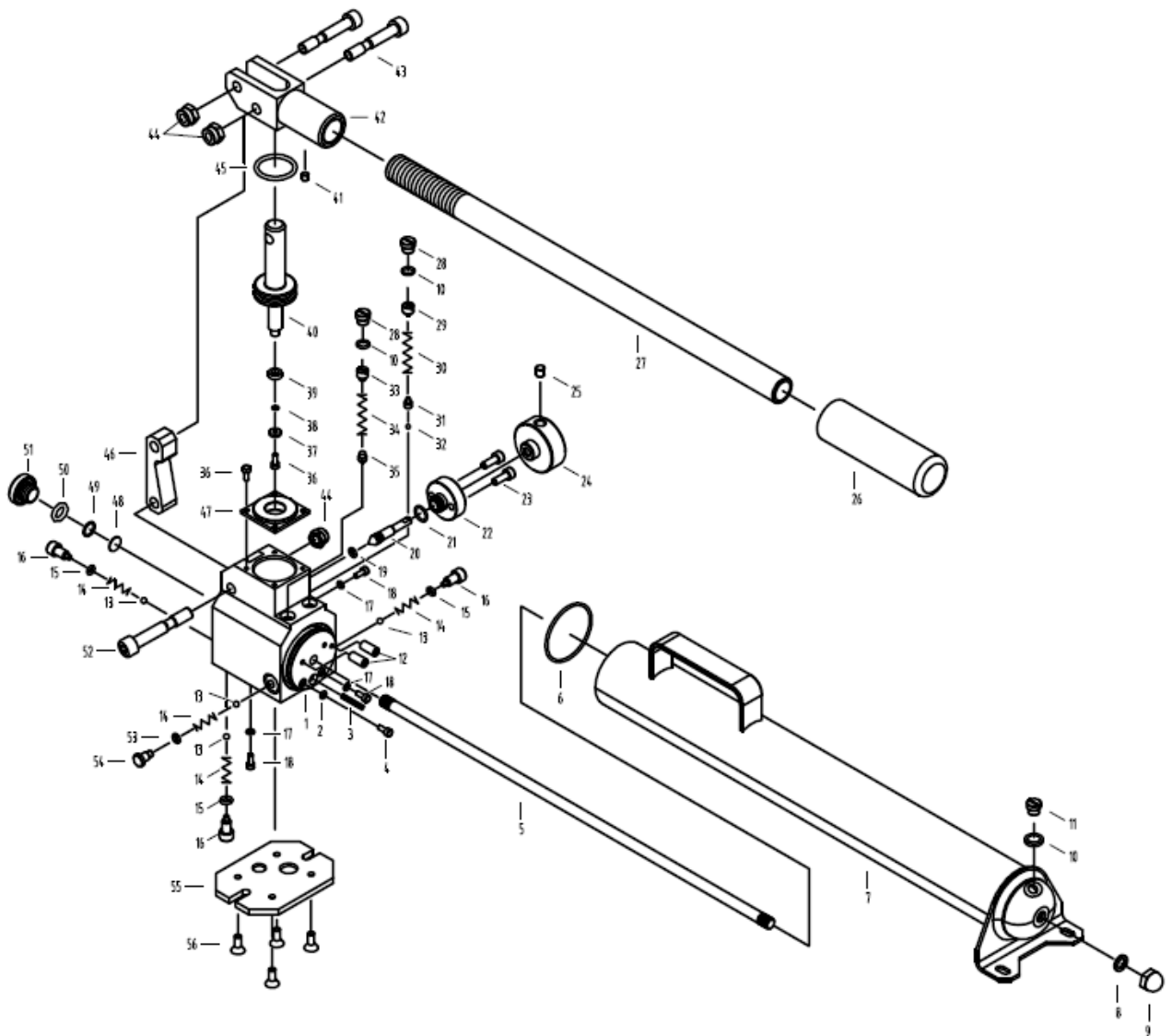




EAGLE PRO Hand Pumps should be repaired only by a qualified operator or Authorized EAGLE PRO Service Centers. Use Only EAGLE PRO or other approved hydraulic oil. Release pressure in hydraulic system and disconnect hose(s) before making repair.

Parts List



Item No.	Part Number	Description	Qty	Item No.	Part Number	Description	Qty
1	NOT AVAILABLE	Valve Block	1	30	EV23-5	Spring	1
2★	QY2-13	Copper Washer	1	31	EV35-2	Ball Seat	1
3	EPA10921A.1-4C	Filter	1	32	41003	Steel Ball	1
4	41063	Bolt M6*8	1	33	EPA21621.1-7	Screw M10*1	1
5	EPA10921A-4	Connecting Shaft	1	34	EV36-02	Spring	1
6★	42998	O-ring 54.5*2.2	1	35	EPA21621.1-8	Cone Valve	1
7	EPA10921A.4	Oil Reservoir	1	36	12002	Bolt M4*8	5
8★	13314	Gasket	1	37	EPA10921A.1.1-2	Washer 11*4.2*2	1
9	14059	Nut M10	1	38	24217	O-ring 7.59x2.62	1
10★	24164	O-ring 8.8*1.9	3	39	21068	Gasket	1
11	EPA10521.03-01	Bolt M10*1	1	40	EPA10921A.1.1-1	Pump Cylinder	1
12	EPA41621-11	Oil Arresting Bolt	2	41▲	EPA10921A-H	Handle Assembly	1
13	41007	Steel Ball	4	42▲	EPA10921A-H	Handle Assembly	1
14	QYL8-10	Spring	4	43	41064	Bolt M10*35(M8)	2
15★	EPA10921A.1-7	Copper Washer	3	44	14053	Bolt	3
16	QYL8-11	Screw M8*12	3	45★	24035	O-ring 31.7*3.5	1
17★	QY1-1	Copper Washer	3	46	EPA10921A-2	Link Rod	1
18	12013	Bolt M5*8	3	47	EPA10921A.1-3	Cover	1
19★◆	24002	O-ring 6.07*1.78	1	48	EPA10921A.1-2	Filter	1
20◆	EPA10921A-R	Release Knob Assembly	1	49	13138	Gasket	1
21★◆	42981	O-ring 12.42x1.78	1	50★	24016	O-ring 18x2.65	1
22◆	EPA10921A-R	Release Knob Assembly	1	51	EPA10921A-1	End Cap	1
23◆	EPA10921A-R	Release Knob Assembly	2	52	41065	Bolt M10*45(M8)	1
24◆	EPA10921A-R	Release Knob Assembly	1	53★	EPA10921A.1-6	Copper Washer	1
25◆	EPA10921A-R	Release Knob Assembly	1	54	EPA10921A.1-5	Screw M10*1	1
26▲	EPA10921A-H	Handle Assembly	1	55	EPA10921A-5	Cover	1
27▲	EPA10921A-H	Handle Assembly	1	56	13105	Bolt M5*12	4
28	EPA21621.1-3	Bolt M10*1	2	57★	EPA10921.2	Eagle Pro Label	1
29	EPA21621.1-4	Screw M10*1	1	58★	EPA10921.1	Warning Label	1
Note:	★ Denotes items in and only available in hand pump repair kit: EPA10921A-RP-B						
	▲ Denotes items that must be replaced as an assembly: EPA10921A-H						
	◆ Denotes items that must be replaced as an assembly: EPA10921A-R						