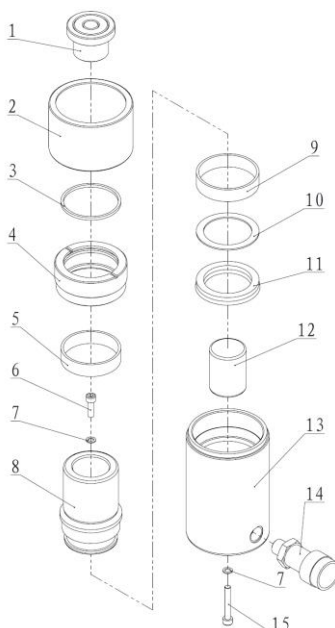




EAGLE PRO Cylinders should be repaired only by a qualified operator or Authorized EAGLE PRO Service Centers. Use Only EAGLE PRO or other approved hydraulic oil. Release pressure in hydraulic system and disconnect hose(s) before making repair.

**Parts List**



Item No.	Part Number	Description	Quantity	Item No.	Part Number	Description	Quantity
1	SG-252G	Saddle	1	12	31044	Return Spring Assembly ES-251 Only	1
2	ES251-4	Thread Cover	1		31045	Return Spring Assembly ES-252 Only	1
3★	21689	Wiper Ring	1		31046	Return Spring Assembly ES-254 Only	1
4	ES251-2	Guide Ring	1		31047	Return Spring Assembly ES-256 Only	1
5	21460	Anti-wear Ring B	1		31048	Return Spring Assembly ES-258 Only	1
6	11004	Bolt	1		31049	Return Spring Assembly ES-2510 Only	1
7★	QY2-13	Copper Washer	2		31050	Return Spring Assembly ES-2512 Only	1
8	ES251-3Y	Piston ES-251 Only	1		31051	Return Spring Assembly ES-2514 Only	1
	ES252-3Y	Piston ES-252 Only	1	13	ES251-1Y	Cylinder Body ES-251 Only	1
	ES254-3Y	Piston ES-254 Only	1		ES252-1Y	Cylinder Body ES-252 Only	1
	ES256-3Y	Piston ES-256 Only	1		ES254-1Y	Cylinder Body ES-254 Only	1
	ES258-3Y	Piston ES-258 Only	1		ES256-1Y	Cylinder Body ES-256 Only	1
	ES2510-3Y	Piston ES-2510 Only	1		ES258-1Y	Cylinder Body ES-258 Only	1
	ES2512-3Y	Piston ES-2512 Only	1		ES2510-1Y	Cylinder Body ES-2510 Only	1
	ES2514-3Y	Piston ES-2514 Only	1		ES2512-1Y	Cylinder Body ES-2512 Only	1
9	21464	Anti-wear Ring A	1		ES2514-1Y	Cylinder Body ES-2514 Only	1
10★	21321	Gasket	1	14	EAB-201A	Coupler	1
11★	24318	Y-ring	1	15	11008	Bolt	1

★ Items included in Repair Kit, Repair Kit order number: **ES251-RP-B**