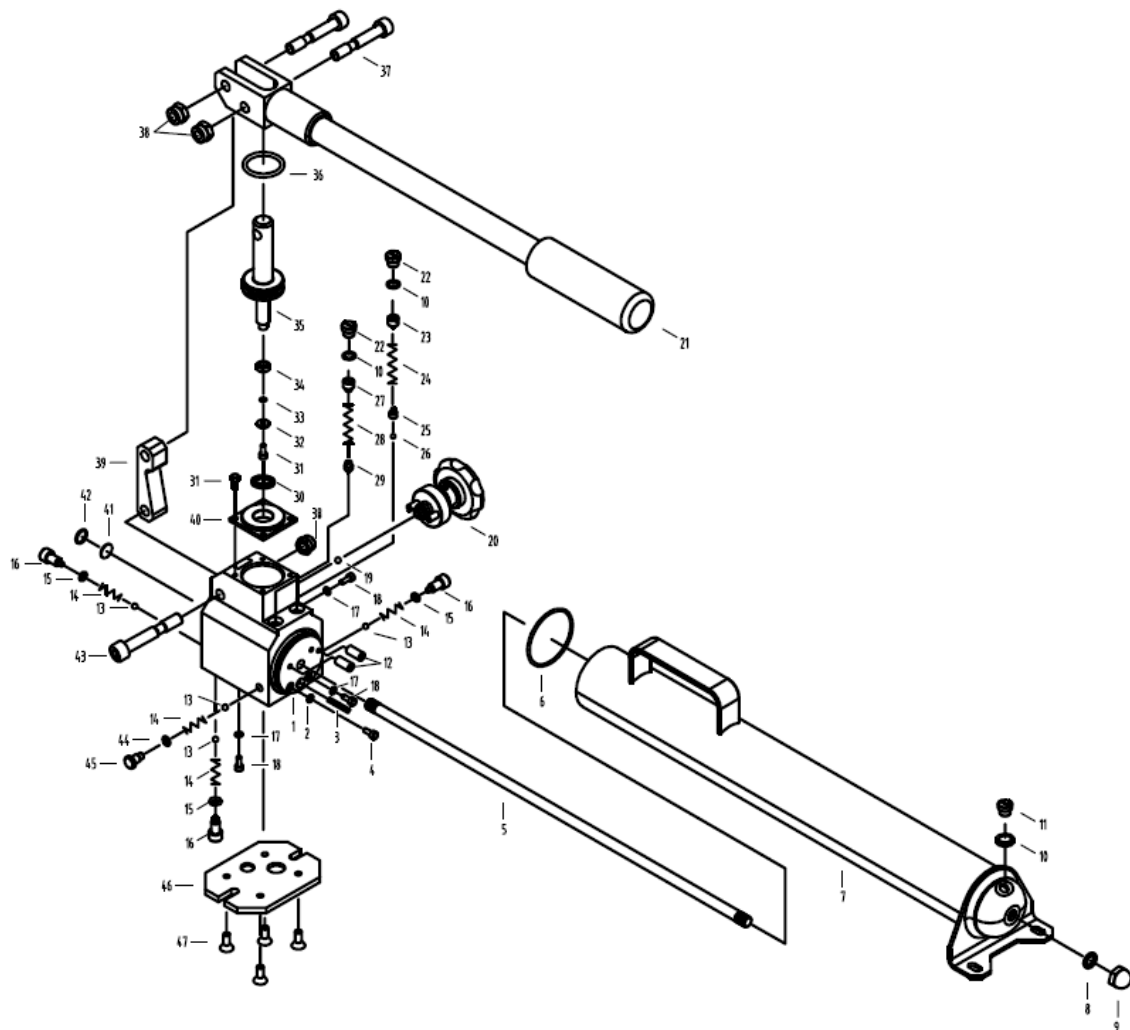




EAGLE PRO Hand Pumps should be repaired only by a qualified operator or Authorized EAGLE PRO Service Centers. Use Only EAGLE PRO or other approved hydraulic oil. Release pressure in hydraulic system and disconnect hose(s) before making repair.

**Parts List**



Item No.	Part Number	Description	Qty	Item No.	Part Number	Description	Qty
1	EPA10921A.1-1	Valve Block	1	25	EV35-2	Ball Seat	1
2★	QY2-13	Copper Washer	1	26	41003	Steel Ball (4.0MM G10)	1
3	EPA10921A.1-4E	Filter	1	27	EPA21621.1-7	Low Pressure Adjustment Screw	1
4	41063	Hex Socket Cap Head Bolt (M6*8)	1	28	EV36-02	Spring	1
5	EPA10921A-4	Connecting Shaft w/Nut	1	29	EPA21621.1-8	Cone Valve	1
6★	42998	O-ring	1	30	41399	Wiper Ring	1
7	EPA10921A01.4	Oil Reservoir	1	31	12002	Hex Socket Cap Head Bolt (M4*8)	5
8★	13314	Gasket	1	32	EPA10921A.1.1-2E	Washer	1
9	14059	Acorn Nut (M10)	1	33	24217	O-ring (7.59*2.62)	1
10★	24164	O-ring (8.8 x 1.9)	3	34	21068	Gasket	1
11	EPA10521.03-01	Oil Plug	1	35	EPA10921A.1.1-1E	Pump Piston Assembly	1
12	EPA41621.1-11	Oil Arresting Bolt	2	36★	24035	O-ring (53.6*3.55)	1
13	41007	Steel Ball (6.0MM G10)	4	37	41064	Hex Socket Cap Bolt	2
14	QYL8-10	Spring	4	38	14053	Lock Nut (M8)	3
15★	13426	Copper Washer	3	39	EPA10921A-2	Link Rod	1
16	EPA10921A.1-8E	Bolt (M8)	3	40	EPA10921A.1-3E	Cover	1
17★	QY1-1	Copper Washer	3	41	EPA10921A.1-2B	Filter	1
18	12013	Hex Socket Cap Head Bolt (M5*8)	3	42	13138	Snap Ring	1
19	41006	Steel Ball (5.5MM)	1	43	41065	Hex Socket Cap Bolt	1
20	EPA10921A-R1	Release Knob Assembly	1	44★	EPA10921A.1-6E	Copper Washer	1
Not Shown	QB8252.3-98	Release Knob Only	1	45	EPA10921A.1-5	Low Pressure Bolt (M10)	1
21	EPA10921A-H	Handle Assembly	1	46	EPA10921A-5	Cover	1
22	EPA21621.1-3	Bolt (M10*1)	2	47	13105	Hex Socket Flat Head Bolt (M5*12)	4
23	EPA21621.1-4	High Pressure Adjustment Screw	1	48★	EPA10921.2	Eagle Pro Label	1
24	EV23-5	Spring	1	49★	EPA10921.1	Warning Label	1
<b>Note:</b> ★ Denotes items in and only available in hand pump repair kit: <b>EPA10921A-RP-B</b>							