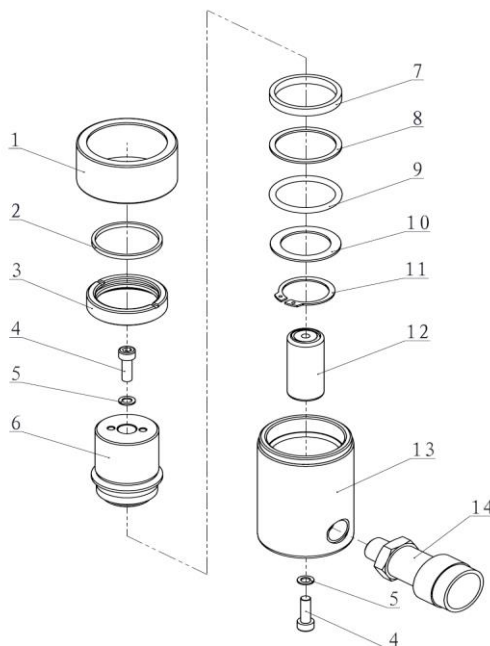




EAGLE PRO Cylinders should be repaired only by a qualified operator or Authorized EAGLE PRO Service Centers. Use Only EAGLE PRO or other approved hydraulic oil. Release pressure in hydraulic system and disconnect hose(s) before making repair.

**Parts List**



| Item No. | Part Number | Description            | Quantity |
|----------|-------------|------------------------|----------|
| 1        | ES101-9     | Thread Cover           | 1        |
| 2★       | ES101-7     | Wiper Ring             | 1        |
| 3        | ES101-6     | Stop Ring              | 1        |
| 4        | 11004       | Bolt                   | 2        |
| 5★       | QY2-13      | Copper Washer          | 2        |
| 6        | ES101-8     | Piston Rod             | 1        |
| 7        | ES101-4     | Anti-wear Ring         | 1        |
| 8★       | ES101-10    | Gasket                 | 1        |
| 9★       | ES101-3     | Y-ring                 | 1        |
| 10       | ES101-2     | Washer                 | 2        |
| 11       | 13232       | Snap Ring              | 1        |
| 12       | 31013       | Return Spring Assembly | 1        |
| 13       | ES101-1     | Cylinder               | 1        |
| 14       | EAB201A     | Coupler                | 1        |

★ Items included in Repair Kit. Repair Kit order number: **ES101-RP-0**