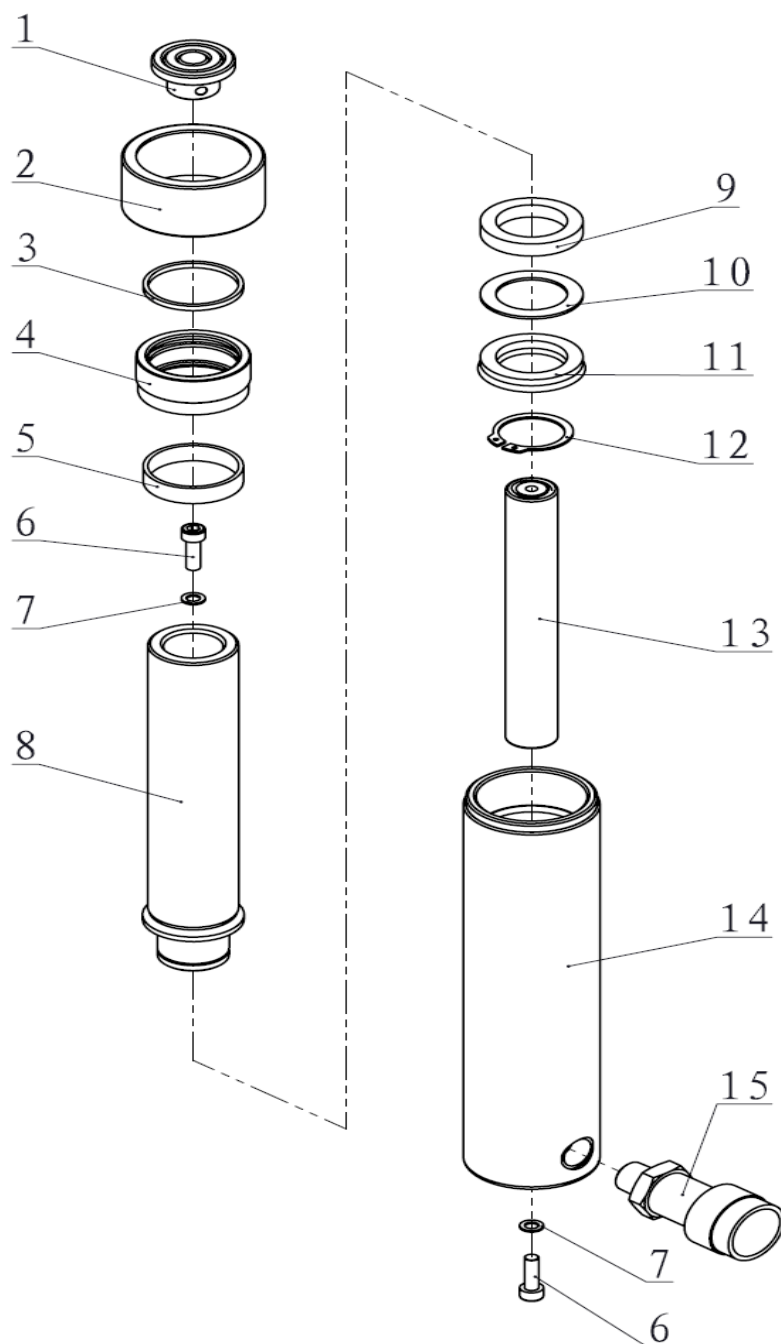




EAGLE PRO Cylinders should be repaired only by a qualified operator or Authorized EAGLE PRO Service Centers. Use Only EAGLE PRO or other approved hydraulic oil. Release pressure in hydraulic system and disconnect hose(s) before making repair.

Parts List



| Item No. | Part Number | Description | Quantity | Item No. | Part Number | Description | Quantity |
|----------|-------------|------------------------|----------|----------|-------------|--|----------|
| 1 | A-102G | Saddle | 1 | 11★ | 24302 | Y-ring | 1 |
| 2 | ES101-9 | Thread Cover | 1 | 12 | 13232 | Snap Ring | 1 |
| 3★ | ES101-7 | Wiper Ring | 1 | 13 | 31022 | Return Spring Assembly ES-106 Only | 1 |
| 4 | ES106-5 | Stop Ring | 1 | | 31025 | Return Spring Assembly ES-108 Only | 1 |
| 5 | ES106-6 | Anti-wear Ring B | 1 | | 31026 | Return Spring Assembly ES-1010 Only | 1 |
| 6 | 11004 | Bolt | 2 | | 31027 | Return Spring Assembly ES-1012 Only | 1 |
| 7★ | QY2-13 | Copper Washer | 2 | | 31028 | Return Spring Assembly ES-1014 Only | 1 |
| 8 | ES106-4 | Piston ES-106 Only | 1 | 14 | ES106-1 | Cylinder Body ES-106 Only | 1 |
| | ES108-4 | Piston ES-108 Only | 1 | | ES108-1 | Cylinder Body ES-108 Only | 1 |
| | ES1010-4 | Piston ES-1010 Only | 1 | | ES1010-1 | Cylinder Body ES-1010 Only | 1 |
| | ES1012-4 | Piston ES-1012 Only | 1 | | ES1012-1 | Cylinder Body ES-1012 Only | 1 |
| | ES1014-4 | Piston ES-1014 Only | 1 | | ES1014-1 | Cylinder Body ES-1014 Only | 1 |
| 9 | ES106-3 | Anti-wear Ring A | 1 | 15 | EAB201A | Coupler | 1 |
| 10★ | ES106-2 | Gasket | 1 | | | | |

★ Items included in Repair Kit, Repair Kit order number: **ES106-RP-0**