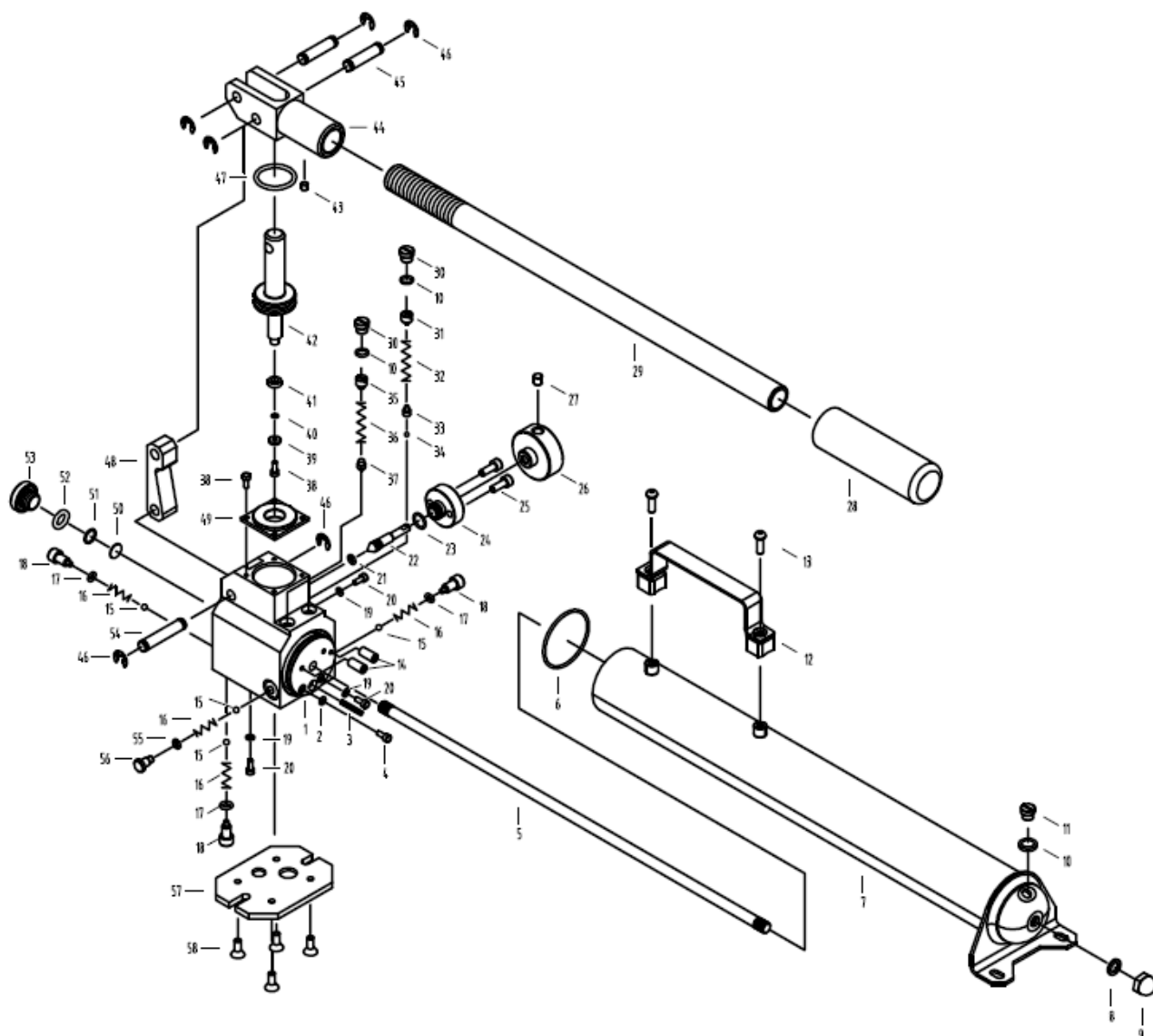




EAGLE PRO Hand Pumps should be repaired only by a qualified operator or Authorized EAGLE PRO Service Centers. Use Only EAGLE PRO or other approved hydraulic oil. Release pressure in hydraulic system and disconnect hose(s) before making repair.

Parts List



Item No.	Part Number	Description	Qty	Item No.	Part Number	Description	Qty
1	EPA10921A.1-1	Valve Block	1	31	EPA21621.1-4	Screw M10*1	1
2★	QY2-13	Copper Washer	1	32	EV23-5	Spring	1
3	EPA10921A.1-4	Filter	1	33	EV35-2	Ball Seat	1
4	41063	Bolt M6*8	1	34	41003	Steel Ball	1
5	EPA10921A-4	Stem	1	35	EPA21621.1-7	Screw M10*1	1
6★	42998	O-ring 54.5*2.2	1	36	EV36-02	Spring	1
7	EPA10921A.4	Oil Reserve	1	37	EPA21621.1-8	Cone Valve	1
8★	13314	Gasket	1	38	12002	Bolt M4*8	5
9	14059	Nut M10	1	39	EPA10921A.1.1-2	Washer 11*4.2*2	1
10★	24164	O-ring 8.8*1.9	3	40	24217	O-ring 7.59x2.62	1
11	EPA10521.03-01	Bolt M10*1	1	41	21068	Gasket	1
12	EPA10921A.2	Handle	1	42	EPA10921A.1.1-1	Pump Cylinder	1
13	13101	Bolt M6*16	2	43	14011	Bolt M6*6	1
14	EPA41621.1-11	Decelerate Bolt	2	44	EPA10921A.3-1	Socket	1
15	41007	Steel Ball	4	45	EPA10921A-3	Pin	2
16	QYL8-10	Spring	4	46	13293	Snap Ring	6
17★	EPA10921A.1-7	Copper Washer	3	47★	24035	O-ring 31.7*3.5	1
18	QYL8-11	Screw M8*12	3	48	EPA10921A-2	Link Rod	1
19★	QY1-1	Copper Washer	3	49	EPA10921A.1-3B	Cover	1
20	12013	Bolt M5*8	3	50	EPA10921A.1-2B	Filter	1
21★	24002	O-ring 6.07*1.78	1	51	13138	Gasket	1
22	EPA21621.1.2-2	Release Rod	1	52★	24016	O-ring 18x2.65	1
23★	42981	O-ring 12.42x1.78	1	53	EPA10921A-1	End Cap	1
24	EPA21621.1.2-3	Release Seat	1	54	EPA21621-1	Pin	1
25	11002	Bolt M6*12	2	55★	EPA10921A.1-6	Copper Washer	1
26	EAC402-5	Knob	1	56	EPA10921A.1-5	Screw M10*1	1
27	14013	Bolt M6*10	1	57	EPA10921A-5	Cover	1
28	EPA10921A.3-3	Handle Sleeve	1	58	13105	Bolt M5*12	4
29	EPA10921A.3-2	Handle	1	59★	EPA10921.2	EAGLE PRO LABEL	1
30	EPA21621.1-3	Bolt M10*1	2	60★	EPA10921.1	WARNING LABEL	1

★ Items included in Repair Kit, Repair Kit order number: **EPA10921A-RP-B**