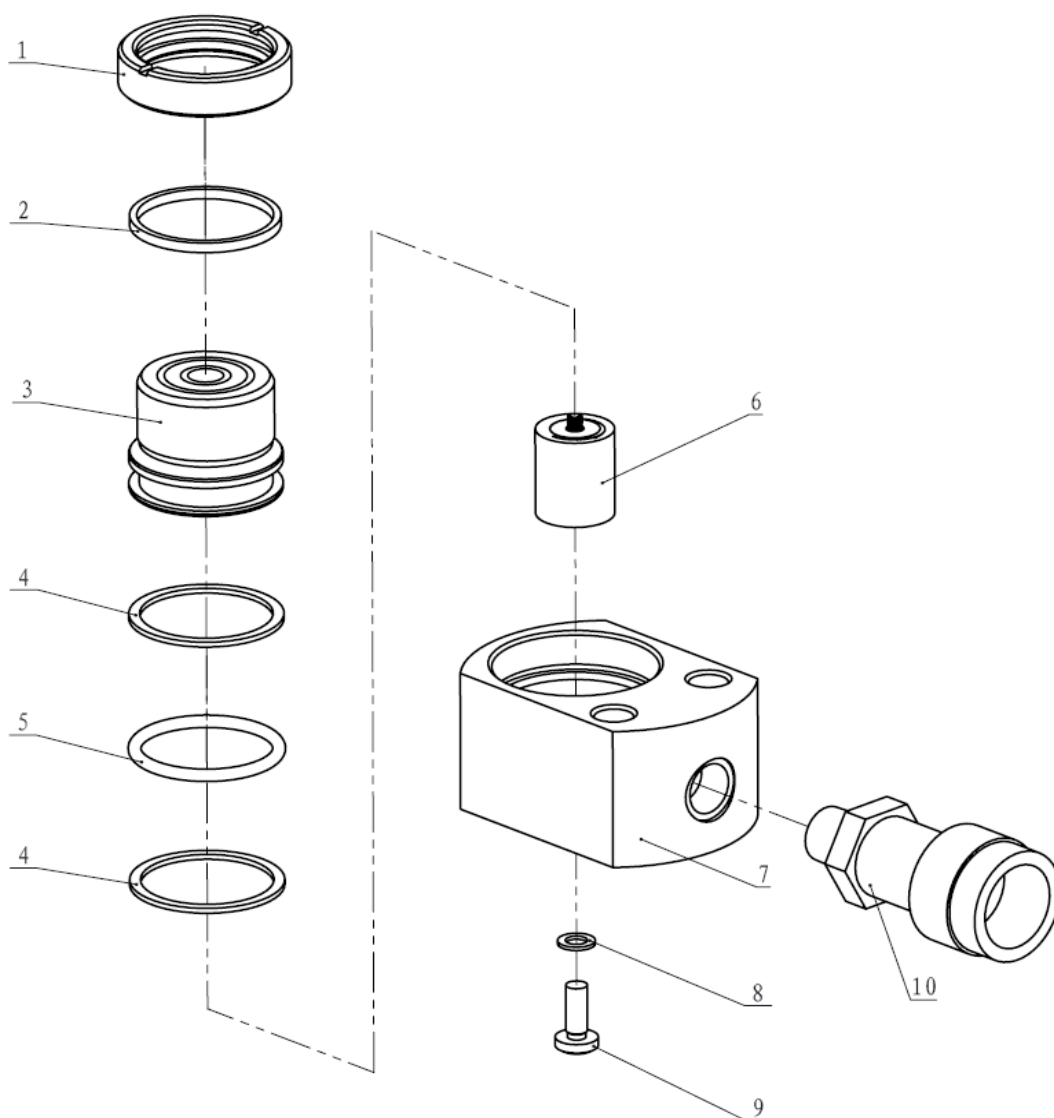




EAGLE PRO Cylinders should be repaired only by a qualified operator or Authorized EAGLE PRO Service Centers. Use Only EAGLE PRO or other approved hydraulic oil. Release pressure in hydraulic system and disconnect hose(s) before making repair.

**Parts List**



| Item No. | Part Number | Description            | Quantity |
|----------|-------------|------------------------|----------|
| 1        | ESL200-4    | Guide Ring             | 1        |
| 2★       | ESL200-5    | Wiper Ring             | 1        |
| 3        | ESL200-2    | Piston Rod             | 1        |
| 4★       | ESL200-6    | Gasket                 | 2        |
| 5★       | ESL200-7    | O-ring                 | 1        |
| 6        | 31008       | Return Spring Assembly | 1        |
| 7        | ESL200-1    | Cylinder               | 1        |
| 8★       | QY2-13      | Copper Washer          | 1        |
| 9        | 11003       | Bolt                   | 1        |
| 10       | EAB201A     | Coupler                | 1        |

★ Items included in Repair Kit, Repair Kit order number: **ESL200-RP-0**