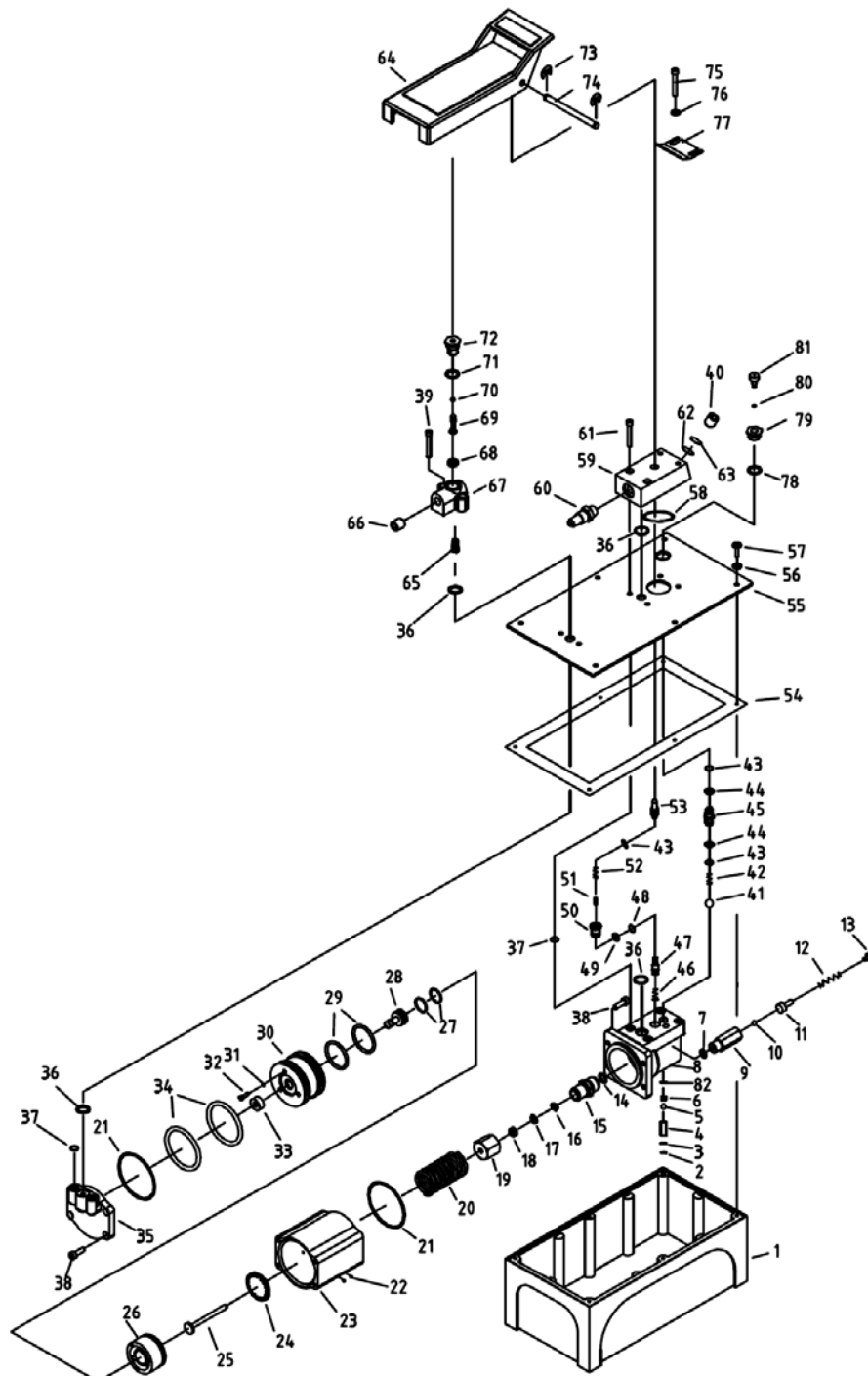




EAGLE PRO Air Hydraulic Pump should be repaired only by a qualified operator or Authorized EAGLE PRO Service Centers. Use Only EAGLE PRO or other approved hydraulic oil. Release pressure in hydraulic system and disconnect hose(s) before making repair.

**Parts List**



No.	Part Number	Description	Qty.	No.	Part Number	Description	Qty.
1	QY2-4	Reservoir	1	42	QD22.2-9	Spring	1
2	13135	Snap Ring	1	43★	QY2-20	O-ring	3
3	QY2S0-01-0007	Oil filter	1	44★	QY2-19	Nylon Gasket	2
4	QY2-11	Oil Suction Pipe	1	45	QY2-18	Coupler	1
5	41007	Steel Ball	1	46	QY2-12	Spring	1
6	QY2-14	Block	1	47	QY2-Y3	Ball Seat	1
7★	QY2-13	Copper Washer	1	48★	QY2-15	O-ring	1
8	QY2-10	Valve Block	1	49★	QY2-16	Nylon Gasket	1
9	QY2.2-1	Safety Valve	1	50	QY2-17	Release Valve	1
10	41003	Steel Ball	1	51	QY2-29	Pin	1
11	QK5.3-22	Ball Seat	1	52	QY2-28	Spring	1
12	QK5.3-21	Safety Valve Spring	1	53	QY2-22	Release Rod	1
13	QK5.3-20	Bolt	1	54	QY2-3	Seal	1
14★	YG1/2.1-3	Copper Washer	1	55	QY2-2	Cover	1
15	QY2-9	Pump Cylinder	1	56	-	No Copper Washer	-
16★	QD22.3-16	Y-ring	1	57	QY100-04-5541	Bolt	12
17★	QD22.3-15	Nylon Gasket	1	58★	QK2.6-14	O-ring	1
18★	QD22.3-14	Copper Washer	1	59	QY2-21	Fixing Base	1
19	QD20.2-9	Nut	1	60	QY100-01-0024	Exhaust Muffler	1
20	QY2-8	Spring	1	61	11007	Bolt	2
21★	QY2-30	O-ring	2	62	15850-01-0042	Filter	1
22	41016	Steel Ball	4	63	13300	Snap Ring	1
23	QY2-7	Air Pump Housing	1	64	QY2-1	Foot Pedal	1
24	QD20.2-8	Washer	1	65	QY2-5	Spring	1
25	QD22.3-13	Pump Plunger	1	66	22T00-01-0012	End Cap	1
26	QD20.2-6	Air Piston Base	1	67	QY2.1-2	Air Valve	1
27★	QD20.2-5	O-ring	2	68	QD22.11.1-4	Seal	1
28	QD20.2-2	Air Shuttle Valve	1	69	QY2.1-1	Air Valve Rod	1
29★	QK2.6-19	O-ring	2	70★	QD22.11.1-7	O-ring	1
30	QD20.2-7	Piston	1	71★	QK5.3-2	O-ring	1
31★	QD22.3-21	O-ring	3	72	QD22.11.1-5	Switch Coupler	1
32	12014	Bolt	3	73	13292	Snap Ring	2
33	QD20.2-3	Shuttle Valve Seal	1	74	QY2-24	Pin	1
34★	QD22.3-11	O-ring	2	75	11009	Bolt	2
35	QY2-6	Rear Cover	1	76	13115	Washer	2
36★	24276	O-ring	4	77	QY2-23	Washer	1
37★	QD20-15	O-ring	6	78	QY2-27	Seal	1
38	11004	Bolt	8	79	QY2-26	Oil Filter Plug	1
39	11005	Bolt	2	80★	24187	O-ring	1
40	QY100-01-0006	End Cap	1	81	QY2-25	Air Plug	1
41	41017	Steel Ball	1	82★	QY2-32	Copper Washer	1

★ Items included in Repair Kit, Repair Kit order number: **EPC001-RP-0**