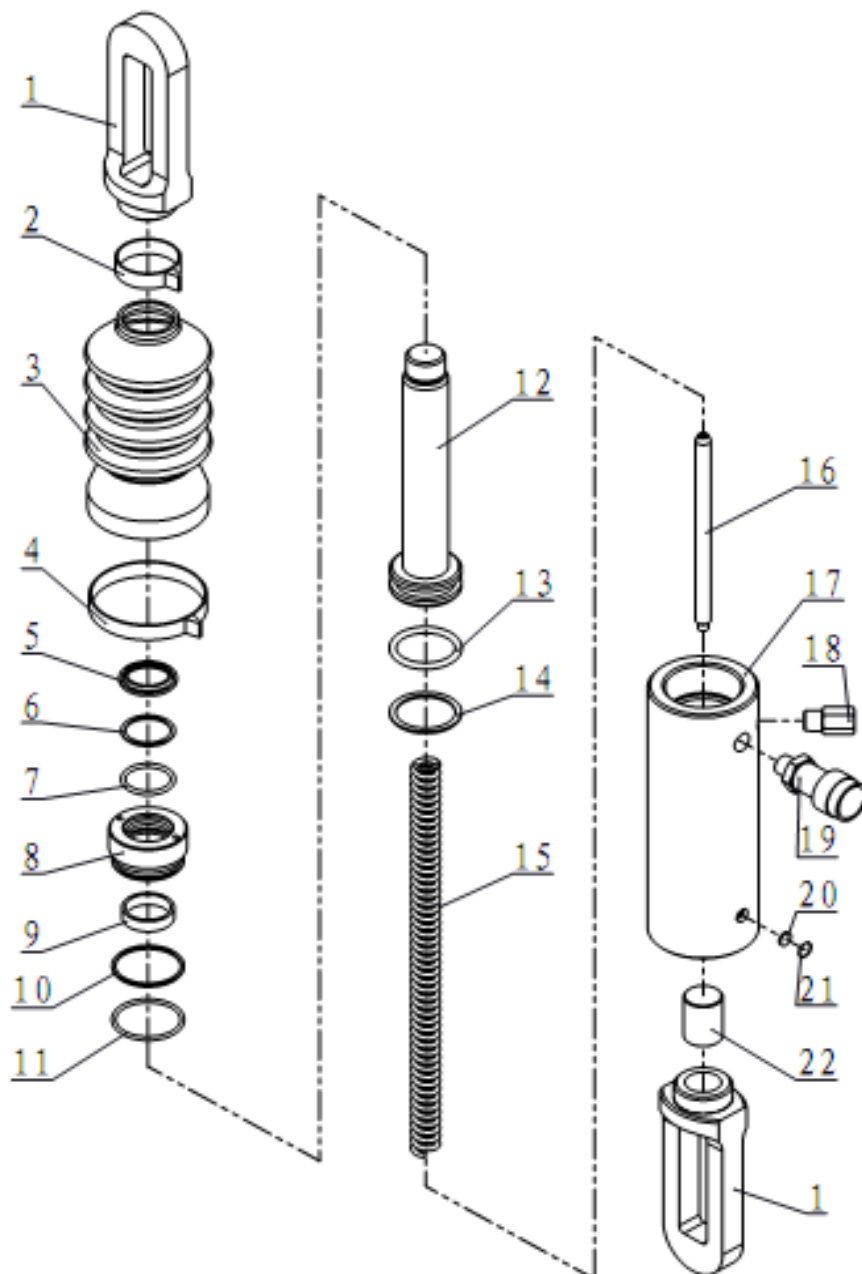




EAGLE PRO Cylinders should be repaired only by a qualified operator or Authorized EAGLE PRO Service Centers. Use Only EAGLE PRO or other approved hydraulic oil. Release pressure in hydraulic system and disconnect hose(s) before making repair.

Parts List



Item No.	Part Number	Description	Quantity	Item No.	Part Number	Description	Quantity
1	ESP106L-01	Link Ring	2	12	ESP106L-05	Piston Rod	1
2	ESP106L-10	Clamp A	1	13★	24248	O-ring	1
3	ESP106L-07	Rubber Boot	1	14★	21298	Gasket	1
4	ESP106L-11	Clamp B	1	15	ESP106L-08	Spring	1
5★	JB-D35	Wiper Ring	1	16	ESP106L-04	Scroll	1
6★	21262	Gasket	1	17	ESP106L-03	Cylinder	1
7★	24216	O-ring	1	18	EF3.1	Safety Valve	1
8	ESP106L-06	Guide Ring	1	19	EAB201A	Coupler	1
9	21524	Anti-wear Ring	1	20	ESP606-04	Filter	1
10★	21305	Gasket	1	21	13299	Snap Ring	1
11★	24223	O-ring	1	22	ESP106L-02	Link Rod	1

★ Items included in Repair Kit, Repair Kit order number: **ESP106L-RP-0**