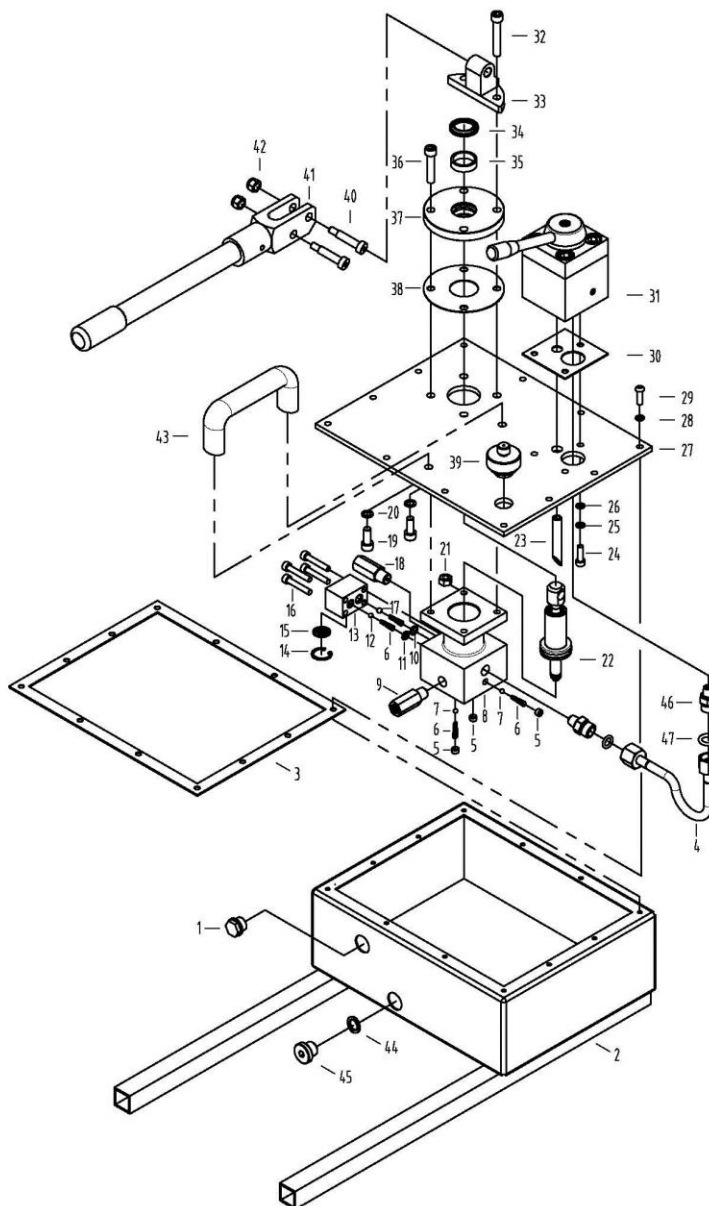




EAGLE PRO Hand Pumps should be repaired only by a qualified operator or Authorized EAGLE PRO Service Centers. Use Only EAGLE PRO or other approved hydraulic oil. Release pressure in hydraulic system and disconnect hose(s) before making repair.

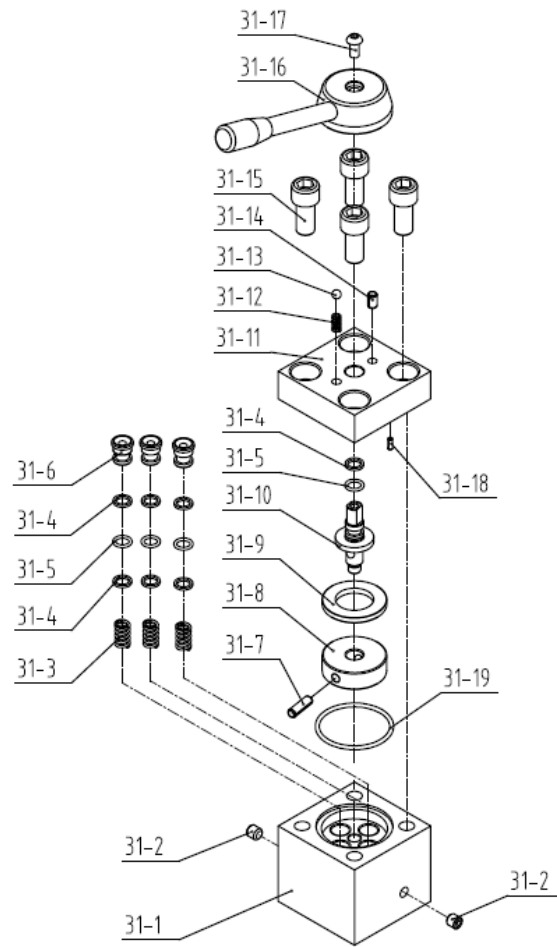
**Parts List**



Item No.	Part Number	Description	Quantity	Item No.	Part Number	Description	Quantity
1	JB283	Oil Sight Glass	1	26	13115	Plain washer	3
2	EPA14522.2.1	Pump Reservoir Assembly	1	27	EPA14522.2-1	Reservoir Top Plate	1
3★	EPA17522-1	Reservoir Gasket	1	28★	QY2-13	Copper Washer	12
4	EPA14522.4	Oil Transfer Tube	1	29	13083	Hex Socket Button Head Bolt (M6*20)	12
5	13114	Set Screw (1/16NPT)	3	30★	EPA14522-2	Valve Gasket	1
6	31042	Spring(0.3*5.6*4.5*21)	4	31	EVM4S	Valve Assembly	1
7	41005	Steel Ball (5.0 G10)	2	32	13008	Hex Socket Cap Head Bolt (M8*50)	2
8	EPA14522.1-2	Pump Body	1	33	EPA14522.1-6	Handle Base	1
9	EV35	High Pressure Safety Valve	1	34★	21716	Wiper Ring(25*33*5)	1
10★	24007	O-ring (7.8*1.9)	1	35	21431	Anti-Wear Ring(30*25*8)	1
11★	24220	O-ring (6.8*1.9)	1	36	13006	Hex Socket Cap Head Bolt (M8*40)	2
12	41019	Steel Ball (4.76 G10)	1	37	EPA14522.1-5	Piston Cover	1
13	EPA14522.1-7	Connection Block	1	38★	EPA14522.1-4	Piston Cover Gasket	1
14	13146	Snap Ring	1	39	EPA31621.3	Reservoir Fill Cap	1
15	EPA14522.1-3	Filter	1	40	41064	Handle Bolt	2
16	11007	Hex Socket Cap Head Bolt (M6*35)	4	41	EPA14522-H	Handle assembly	1
17	41006	Steel Ball (5.5 G10)	1	42	14053	Lock Nut (M8)	2
18	EV36	Low Pressure Safety Valve	1	43	QB8253.1-98	Carrying Handle	1
19	13003	Hex Socket Cap Head Bolt (M8*20)	2	44	13316	O-Ring (14mm)	1
20★	YG1/2.2-1	Copper Washer	2	45	41089	Oil plug	1
21	14038	Nut (M8)	4	46	EJH.0-1	Coupler	2
22	EPA14522.1.1A	Piston Assembly	1	47★	24164	O-Ring (8.8*1.9)	2
23	EJH001	Oil Return Tube	1	48★	EPA14522.1	Eagle Pro Label	1
24	11004	Hex Socket Cap Head Bolt (M6*20)	3	49★	EPA14522.2	Warning Label	1
25	13124	Lock washer	3				

★Items included in Repair Kit, Repair Kit order number: **EPA14521-RP-B**

## EVM4S Valve Assembly



Item No.	Part Number	Description	Quantity	Item No.	Part Number	Description	Quantity
31-1	EVM4S-01	Valve Body	1	31-11	EVM4-03	Valve Body Cover	1
31-2	13114	Set Screw (1/16NPT)	2	31-12	EVM4-06	Spring (0.8*5.5*8)	1
31-3	EVM4-05	Spring (1.6*10*16)	3	31-13	41007	Steel ball (6 G10)	1
31-4	21073	Snap Ring(12*9*1.4)	7	31-14	13354	Pin	1
31-5	24164	O-Ring (8.8*1.9)	4	31-15	13034	Hex Socket Head Cap Bolt (M12*25)	4
31-6	EVM4-02	Plunger	3	31-16	EVM4-01	Handle Assembly	1
31-7	13359	Pin	1	31-17	11002	Hex Socket Head Cap Bolt (M6*12)	1
31-8	EVM4.02	Oil Disk Assembly	1	31-18	13320	Pin	1
31-9	GB4605-84	Bearing Assembly	1	31-19	24047	O-Ring (45.69*2.62)	1
31-10	EVM4-04	Spindle	1				