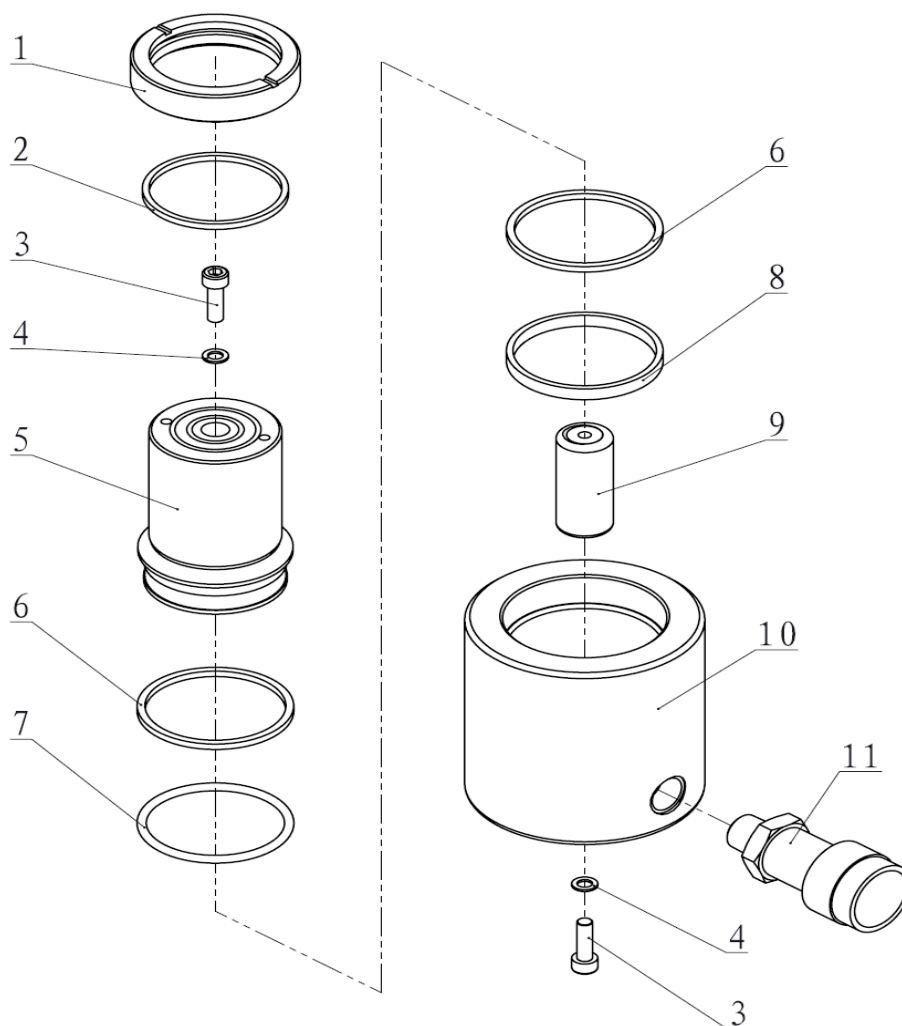




EAGLE PRO Cylinders should be repaired only by a qualified operator or Authorized EAGLE PRO Service Centers. Use Only EAGLE PRO or other approved hydraulic oil. Release pressure in hydraulic system and disconnect hose(s) before making repair.

Parts List



| Item No. | Part Number | Description | Quantity |
|----------|-------------|------------------------|----------|
| 1 | ES101-6 | Guide Ring | 1 |
| 2★ | ES101-7 | Wiper Ring | 1 |
| 3 | 11004 | Bolt | 2 |
| 4★ | QY2-13 | Copper Washer | 2 |
| 5 | ESL101-2 | Piston Rod | 1 |
| 6★ | ESL100-6 | Gasket | 2 |
| 7★ | ESL500-6 | O-ring | 1 |
| 8 | ESL101-3 | Anti-wear Ring | 1 |
| 9 | 31014 | Return Spring Assembly | 1 |
| 10 | ESL101-1 | Cylinder | 1 |
| 11 | EAB201A | Coupler | 1 |

★ Items included in Repair Kit, Repair Kit order number: **ES101-RP-0**